

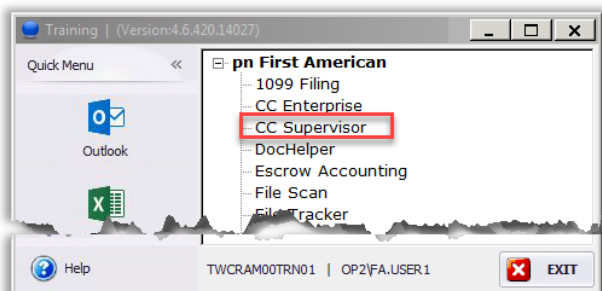


Endorsement Mapping and Certification in AgentNet®

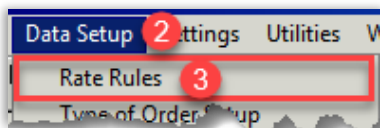
Learn how to find Endorsement codes in RamQuest. Review, customize, and certify Policy and Endorsement premiums from AgentNet®. This feature allows you to set custom names for Endorsements and Fees in AgentNet. Endorsement mapping is not required for the Integration to function.

Find Endorsement Codes in RamQuest

1. In the **RamQuest Live** window, double-click **CC Supervisor**



2. In the Complete Closing Supervisor window, click **Data Setup**
3. Click **Rate Rules**



4. In the **Rate Rules** window, locate **Codes** for the desired **Endorsement Descriptions**
5. Make a note of these **Codes** so they can be used for **Mapping**

4	Code	Rate Rule Reference	Description
	0140	R11d	Adjustable Mortgage Loan
	0141	R11d/R4	Adjust Mortg Loan WMP in exce
	0142	R11	VRM Negative Amort
	0143	R4	VRM Negative Amort / NC

6. Click

7. Click

NOTE: In order to map a specific Endorsement to AgentNet, you can use the Endorsement's Code located in the Code column. You want to locate the **Code**, enter it in **AgentNet**, and **Certify** the **Code**.

NOTE: If you are going to map **Endorsements**, locate **Endorsements** for which your **State** charges and map those **Endorsements** first.

Create a Corporate Standard Mapping

Beginning from the Home page of [AgentNet](#):

1. Point to **Administration**
2. Click **Manage Firm Mappings**



NOTE: The Manage Firm Mappings window opens.

3. Select a **Mapping Type**
4. Select a **Select Vendor** option
5. In **Select Mapping**, select **Corporate Standard**

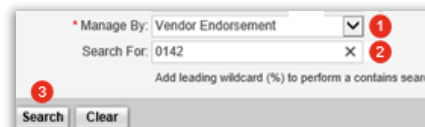


NOTE: Initially, **Corporate Standard** is the only option. You can create a **Mapping** and select it in the future.

Use a Vendor Endorsement

To search based on a Vendor's Product/Endorsement name you, must select the **Vendor Endorsement** option.

1. Select **Vendor Endorsement**
2. Enter **Search For** information
3. Click **Search**





Use an FA Endorsement

To search based on the First American Product/Endorsement name, you must select the **FA Endorsement** option.

1. Select **FA Endorsement**
2. Click **Search**
3. Enter the **Codes** obtained from **RamQuest** in the **Firm Endorsement** column

Use a State Endorsement

To search all Product/Endorsements for a particular state, you must select the **State** option.

1. Select **State Endorsement**
2. In the **Search For** dropdown list, select a **State**
3. Click **Search**
4. Enter the **Codes** obtained from **RamQuest** in the **Firm Endorsement** column

Create a New Mapping

You can save a **Mapping** after making your selections.

1. Click **Save As**
2. Enter **New Mapping** name
3. Click **Save**

NOTE: The **Agent Template** name is now available in the **Select Mapping** list, enabling you to edit it and assign it to any office in your firm.

Manage Office Associations & Certify Mappings

To use the **Rates and Fees** feature in **RamQuest**, you must assign your **Mapping** to applicable **Offices** and certify your **Endorsement Mapping**.

1. Click **Manage Office Associations & Certify Mappings**
2. In the **Endorsement Mapping** dropdown list, select a **Firm**, **Office**, or **Account** option

3. Select the **Endorsement Mapping** name
4. Continue selecting the item to certify and the desired **Endorsement Mapping** name
5. Click **Save Association**
6. Click **Continue** to respond to the **Warning**
7. Click **Certify**
8. Click **Certify** again to confirm **EULA** terms
9. Click **Cancel** to close the window