



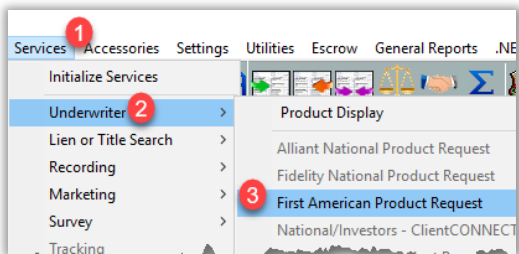
## Closing Protection Letters – Generate in Landtech

Learn how to generate, view and print a Closing Protection Letter (CPL) in Landtech using the AgentNet® integration.

### Generate a Closing Protection Letter

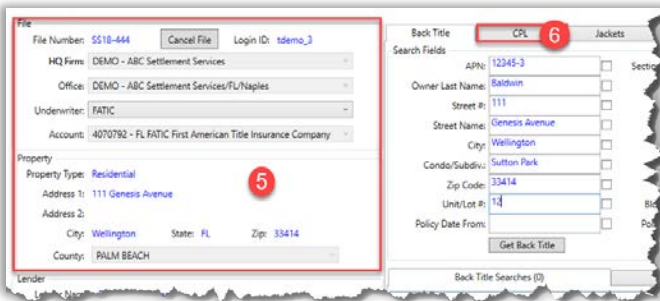
Beginning from an existing Landtech File:

1. Click the **Services** tab
2. Highlight **Underwriter**
3. Select **First American Product Request**



**NOTE:** A pop up window opens prompting you to save your closing file in order to process your request.

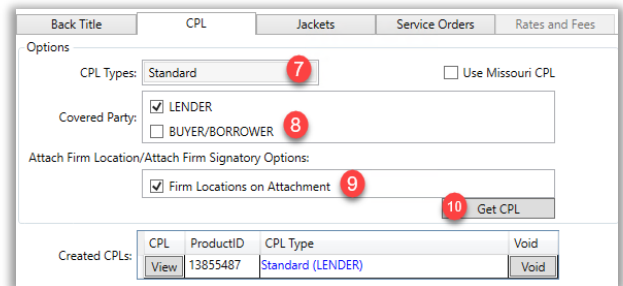
4. Click **Yes**
5. In the Landtech AgentNet Integration screen, verify/complete the File information
6. Click the **CPL** tab



7. Verify/Select the **CPL Type**

**NOTE:** Missouri agents can select the Use Missouri CPL option.

8. Select the **Covered Party**
9. Select **Firm Locations on Attachment**, if preferred
10. Click **Get CPL**



**NOTE:** The CPL is generated and opened on screen with delivery options displayed.

11. Click

12. In the Print window, click **Print**

**NOTE:** The CPL is automatically saved to the Document Manager under the First American folder.